



Bain®
Custom

COLLECTION

2023

WHO IS BAUM?

ORIGINATED IN DENMARK. PLAYED WORLDWIDE.

Baum is a Danish brand designing, crafting, and manufacturing high-quality instruments rooted in Aarhus, Denmark.

Led by design and guitar connoisseurs. The Baum team design and crafts a variety of guitars and basses rooted in the Danish design and modern instruments. Our workshop in Aarhus, Denmark is the epicenter for our custom crafted instruments. The Custom Collection is the inspiration for the Original Series and VEGA series.



DANISH DESIGN EXPRESSED IN CRAFTMANSHIP

- IS BAUM CUSTOM



LEVITATOR™ CUSTOM. IN-TUNE WITH BETTER TONE.



An innovative roller-bridge designed by Baum to keep your guitar in tune. The Levitator Pro is cut from solid brass and offers an enhanced and complex harmonic richness.

COMFORTABLE C-PROFILE. 60S CLASSIC. MODERN CLASSY.



The signature Baum Neck profile is a modern C-shape. Carved for players that like a comfortable and familiar neck shape.

GOLDSOUND® PICKUPS. THE POWERFUL BAUM SOUND



The signature Baum sound. Made by Baum to pick up the instruments' unique voices.

BAUM CUSTOM COLLECTION

The Baum Custom Collection is Baum's best. Every single custom instrument is carefully crafted at our workshop in Aarhus, Denmark. A Baum Custom is tailored to the player's needs.

With a broad palette of materials, colours, and sounds available, we can fine-tune the instrument to each player's ears.

This is where we create unique instruments. Where we express ourselves. And inspire players to do the same. To create without constraint.

Each instrument is made with intent. And with the highest grade of components and attention to detail. The Baum Custom Collection is available via direct orders and selected Baum dealers.



CRAFTED FOR MUSICIANS

THE WHOLE IS GREATER THAN THE SUM OF ITS PARTS.

And we use really good parts.

Each component in the Baum Custom is chosen with intent to bring a certain quality to the instrument.

The Custom Collection instruments always use:

- **HIGH-GRADE WOODS SELECTED PIECE BY PIECE TO REACH THE OPTIMAL WEIGHT AND FEELING.**
- **ONE-PIECE MAPLE**
– FROM PLAIN TO GRADE AAAA FLAMED.
- **GOLDSOUND® PICKUPS**
- **LEVITATOR™ ROLLER-BRIDGE**
- **BIGSBY USA – B5 & B7**
- **MASTERY BRIDGE / TREMOLO**
- **NITROCELLULOSE LACQUER**



THE GOLDSOUND PICKUPS

EACH GOLDSOUND IS DESIGNED
TO PICK UP THE INSTRUMENT'S
UNIQUE VOICE AND GIVE IT A
CERTAIN CHARACTER.

JABMASTER

Jabmaster delivers a powerful clean sound and crisp overdriven tone. It excels at note articulation and will sound great in almost every genre.

The wide-wound and broader single coil has an increased reactive field that gives a bold and clear tone surely packing a punch while retaining dynamics.

REWIND 52

Rewind '52 is an old-school P90 with a tight low-end, raunchy midrange and a bold texture with a crispy top. The Rewind '52 produces a raw powerful tone that has co-defined blues and rock n roll throughout the decades. And still does today.

ROYAL

A high-fidelity humbucker rooted in the original P.A.F. pickup. With a bold voice, a powerful midrange, and a crisp attack, the Royal Humbucker is expressive and clear with a dynamic giving the player full control.

GOLDBUCKER

Goldbuckers, a mini-humbucker clearer and cleaner than full-sized humbuckers. Except for the size the Goldbucker shares its construction with the iconic PAF counterpart. A smaller pickup sense a more focused area of your strings. And with a little extra beef spicing it up, the mini-humbucker produces a bright and mighty tone fit for many genres.

POWERJAB

A bright, punchy, and powerful single-coil. The bass is the backbone, but the Powerjab brings you right to the front of the stage with the right amount of low-end to rock n' rumble.

CUSTOM OPTION

Can't find the right Goldsound? Baum also offers custom and hand-wound Goldsound pickups. Just reach out, so we can tailor a set for you. Additional price for custom Goldsound.

POWERJAB



REWIND 52



GOLDBUCKER



ROYAL



JABMASTER



CUSTOM OPTION



WMM BASS



22

MIDHOGG



21

WINGMAN



19

VERGE



18

REVOLT



17

LEAPER TONE



16

LEAPER AIR



15

CONQUER 59



14

GARVE



13

BACKWING



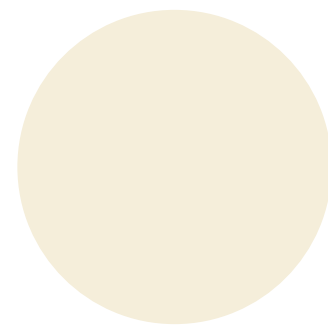
12

BODY COLOURS

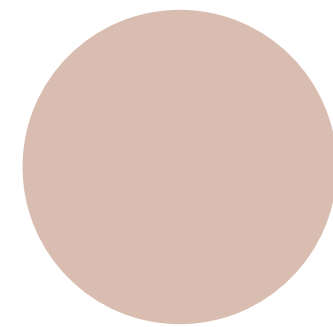
PLAIN COLOURS



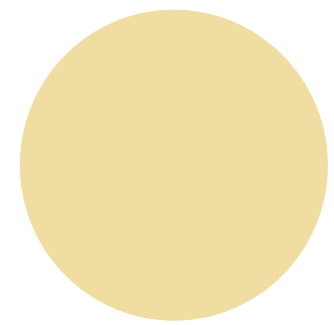
Vintage White



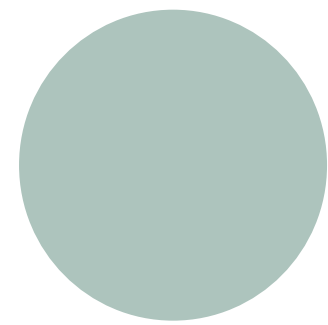
Ivory



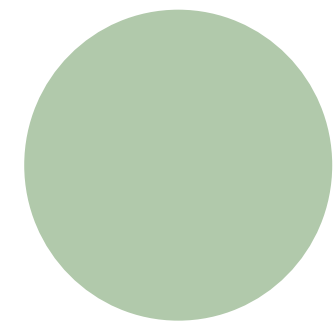
Vintage Pink



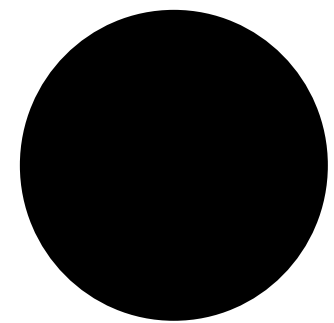
Vintage Yellow



Vintage Sky



Surfgreen

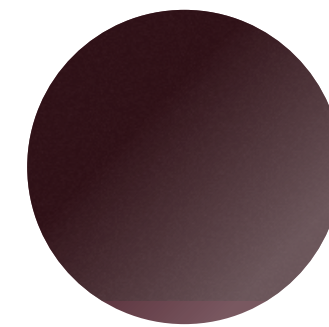


Pure Black

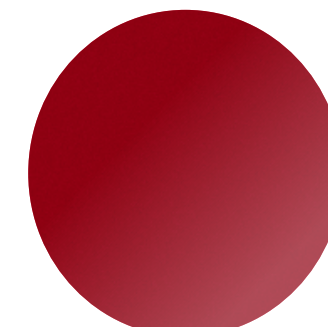
METALLIC COLOURS



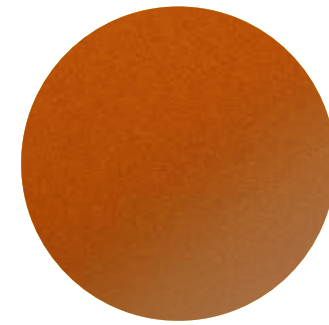
Dark Moon



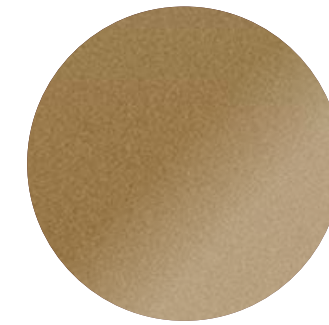
Mulberry



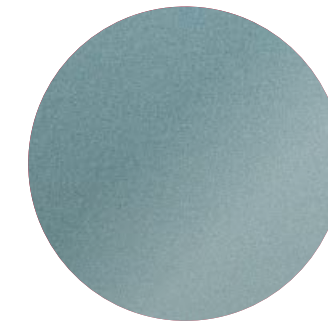
Deep Red



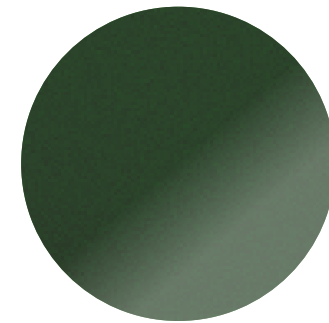
Hot Lava



Inca Gold



Pelham Blue



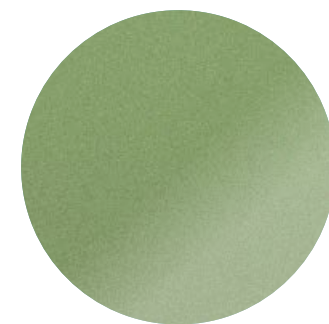
Deep Forest



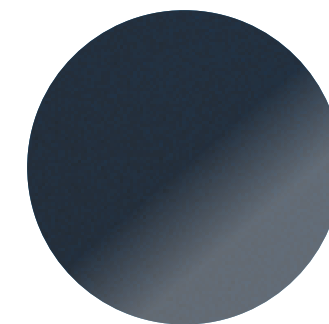
Skyline Silver



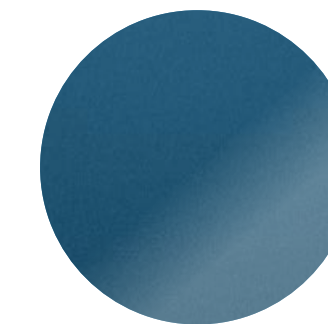
Shoreline Gold



Willow Green

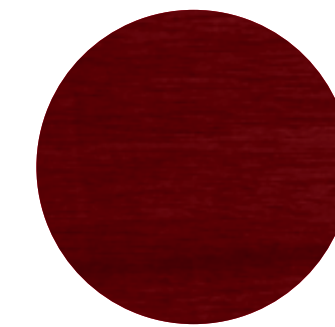


Deep Sea

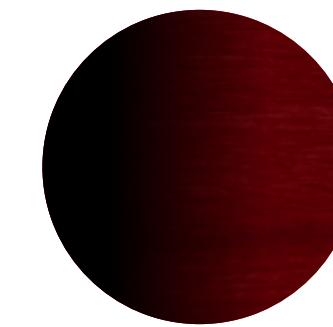


Sapphire Blue

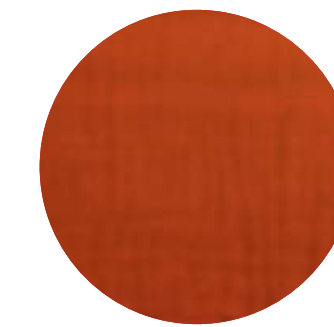
TRANSPARENT COLOURS



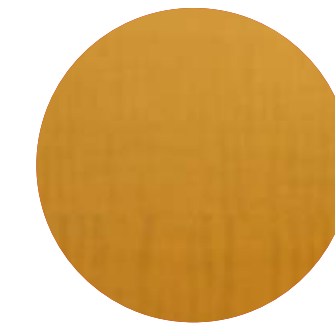
Burgundy Red



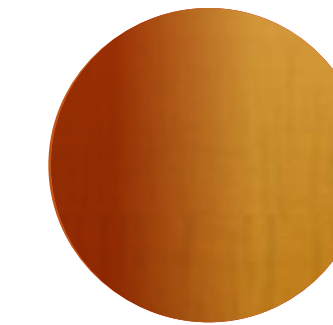
Red Burst



Burnt Orange



Mustard Yellow



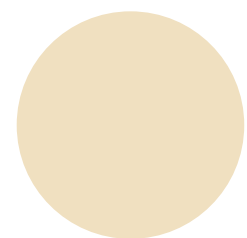
Honey Burst

PICKUPS

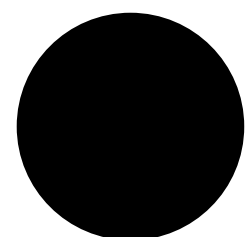
COVER & FRAME



Vintage White



Ivory



Black

P90 SHAPE



Goldbucks



Rewind 52



Jabmaster

HUMBUCKER



Royal

SINGLE COIL



Vintage 69

SINGLE COIL BASS



Powerjab

HARDWARE AND MATERIALS

HARDWARE

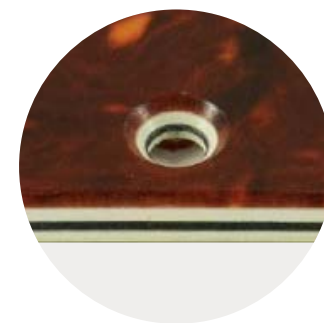


Nickel

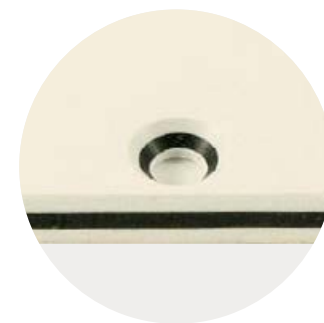


Gold

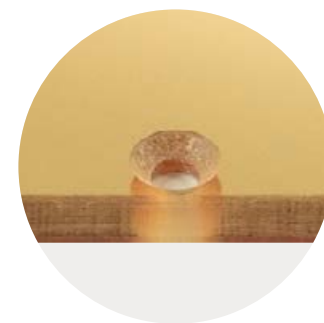
PICKGUARD



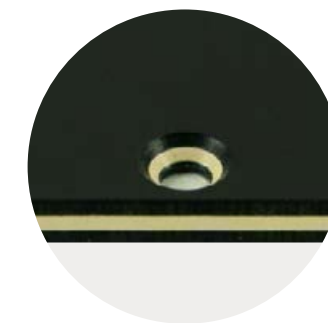
Tortoise



Vintage White



Gold Metallic

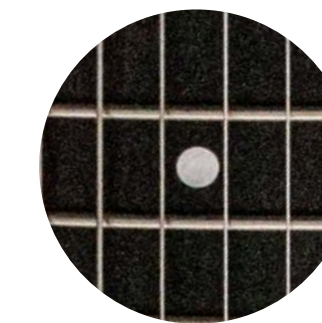


Black

INLAY



Crown



Dot

BINDING



Ivory

GUITARS



Baum[®]
Custom

BACKWING



START RRP INCL. VAT
4.614 EUR

NECK

Scale: 25,5"
Type: Bolt-on
Profile: Modern C / 1F: 20,5mm / 12F: 23 mm
Fretboard: 12" Radius
Frets: Medium Jumbo
Inlay: Crown / Dot Pearloid
Finish: Oil
Headstock: Blade 6 in line
Nut: TUSQ / 42,9 mm

BODY

Body: Solid
Finish: Nitrocellulose lacquer
Binding: Fretboard / Top

HARDWARE

Tuners: Schaller
Tail: Stoptail Schaller / Bigsby B5
Bridge: Levitator
Pickups: Goldsound
Knobs: Bell / Tophat
Control: N: Vol. / B: Vol / N: Tone / B: Tone

MEASSUREMENTS

Width: 350 mm
Length: 1043 mm
Weight: 3,2 - 3,5 kg.



CARVE

START RRP INCL. VAT

4.698 EUR



NECK

- Scale:** 25,5"
- Type:** Bolt-on
- Profile:** Modern C / 1F: 20,5mm / 12F: 23 mm
- Fretboard:** 12" Radius
- Frets:** Medium Jumbo
- Inlay:** Crown / Dot Pearloid
- Finish:** Oil
- Headstock:** Teardrop / 3x3
- Nut:** TUSQ / 42,9 mm

BODY

- Body:** Solid
- Finish:** Nitrocellulose lacquer
- Binding:** Fretboard / Headstock

HARDWARE

- Tuners:** Schaller
- Tail:** Stoptail Schaller / Bigsby B5
- Bridge:** Levitator
- Pickups:** Goldsound
- Knobs:** Bell / Tophat
- Control:** Master Vol. / Master Tone.

MEASSUREMENTS

- Width:** 330 mm
- Length:** 1000 mm
- Weight:** 3,2 - 3,5 kg.



CONQUER 59



START RRP INCL. VAT
5.034 EUR

NECK

Scale:	25,5"
Type:	Bolt-on
Profile:	Modern C / 1F: 20,5mm / 12F: 23 mm
Fretboard:	12" Radius
Frets:	Medium Jumbo
Inlay:	Crown / Dot Pearloid
Finish:	Oil
Headstock:	Teardrop 3x3 / Blade 6 in line
Nut:	TUSQ / 42,9 mm

BODY

Body:	Semi-hollow
Finish:	Nitrocellulose lacquer
Binding:	Fretboard / Headstock

HARDWARE

Tuners:	Schaller
Tail:	Stoptail Schaller / Bigsby B5
Bridge:	Levigator
Pickups:	Goldsound
Knobs:	Bell / Tophat
Control:	N: Vol. / B: Vol. / Master Tone

MEASUREMENTS

Width:	351 mm
Length:	1035 mm / 1048 mm
Weight:	3,2 - 3,5 kg.



LEAPER AIR



START RRP INCL. VAT

6.711 EUR

NECK

Scale:	25,5"
Type:	Bolt-on
Profile:	Modern C / 1F: 20,5mm / 12F: 23 mm
Fretboard:	12" Radius
Frets:	Medium Jumbo
Inlay:	Crown / Dot Pearloid
Finish:	Oil
Headstock:	Teardrop 3x3
Nut:	TUSQ / 42,9 mm

BODY

Body:	Hollow
Finish:	Nitrocellulose lacquer
Binding:	Top / Back / Fretboard / Headstock F-Hole

HARDWARE

Tuners:	Schaller
Tail:	Stoptail Schaller / Bigsby B7
Bridge:	Levigator
Pickups:	Goldsound
Knobs:	Bell / Tophat
Control:	N: Vol. / B: Vol. / N: Tone / B: Tone

MEASSUREMENTS

Width:	408 mm
Length:	1070 mm
Weight:	3,0 - 3,5 kg.



LEAPER TONE



START RRP INCL. VAT
5.537 EUR

NECK

Scale: 25,5"
Type: Bolt-on
Profile: Modern C / 1F: 20,5mm / 12F: 23 mm
Fretboard: 12" Radius
Frets: Medium Jumbo
Inlay: Crown / Dot Pearloid
Finish: Oil
Headstock: Teardrop 3x3
Nut: TUSQ / 42,9 mm

BODY

Body: Semi-hollow
Finish: Nitrocellulose lacquer
Binding: Top / Fretboard / Headstock / F-Hole

HARDWARE

Tuners: Schaller
Tail: Stoptail Schaller / Bigsby B7
Bridge: Levitator
Pickups: Goldsound
Knobs: Bell / Tophat
Control: Master Vol. / Master Tone

MEASSUREMENTS

Width: 351 mm
Length: 1030 mm
Weight: 3,2 - 3,4 kg.



REVOLT



START RRP INCL. VAT
4.698 EUR

NECK

Scale: 25,5"
Type: Bolt-on
Profile: Modern C / 1F: 20,5mm / 12F: 23 mm
Fretboard: 12" Radius
Frets: Medium Jumbo
Inlay: Crown / Dot Pearloid
Finish: Oil
Headstock: Teardrop 3x3
Nut: TUSQ / 42,9 mm

BODY

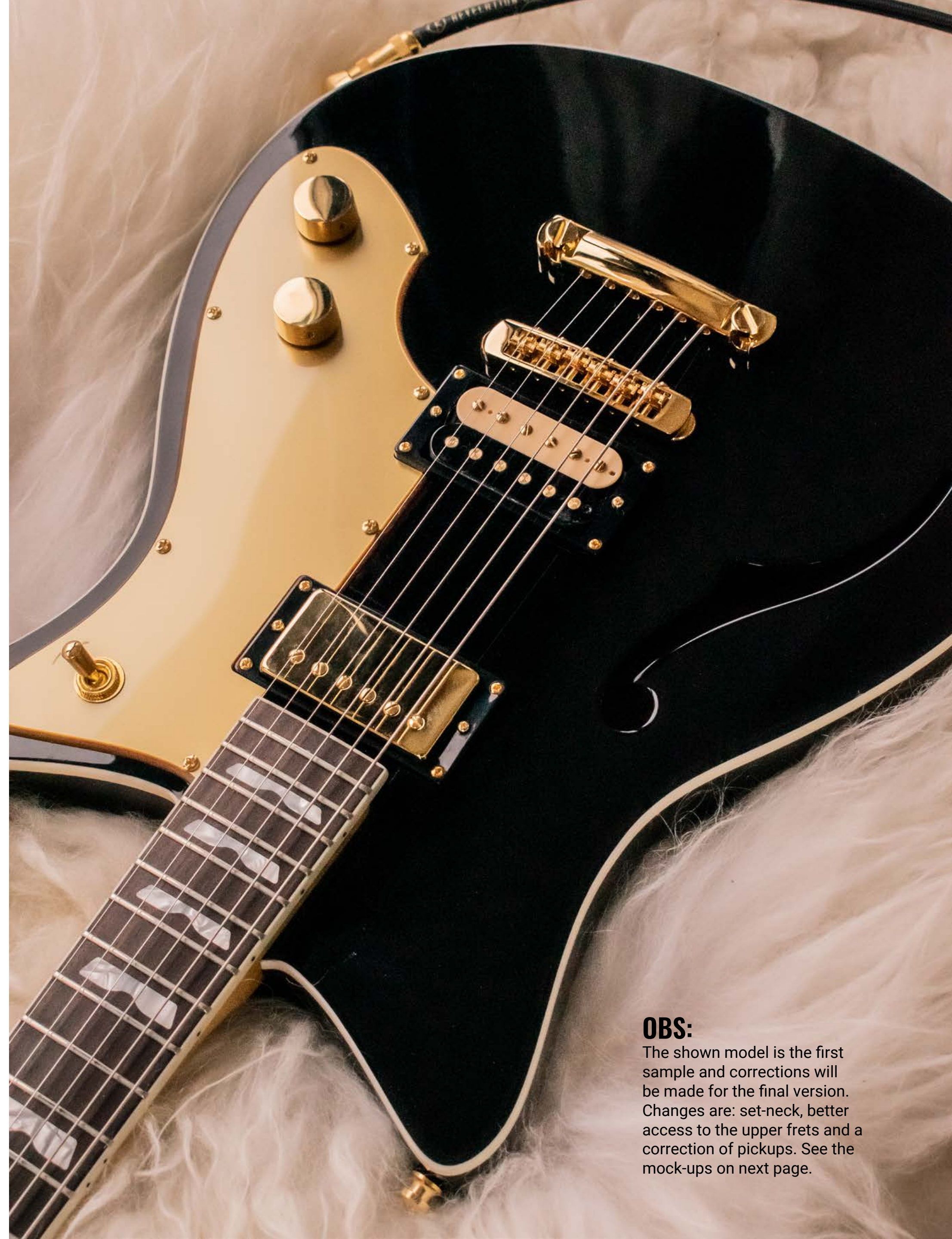
Body: Solid / Semi-hollow
Finish: Nitrocellulose lacquer
Binding: Fretboard / F-hole / Top / Headstock

HARDWARE

Tuners: Schaller
Tail: Stoptail Schaller / Bigsby B5
Bridge: Levitator
Pickups: Goldsound
Knobs: Tophat Silver / Gold
Control: Master Vol. / Master Tone

MEASUREMENTS

Width: 348 mm
Length: 1016 mm
Weight: 3,2 - 3,5 kg.



OBS:

The shown model is the first sample and corrections will be made for the final version. Changes are: set-neck, better access to the upper frets and a correction of pickups. See the mock-ups on next page.

VERGE



START RRP INCL. VAT
4.530 EUR

NECK

Scale: 25,5"
Type: Bolt-on
Profile: Modern C / 1F: 20,5mm / 12F: 23 mm
Fretboard: 12" Radius
Frets: Medium Jumbo
Inlay: Crown / Dot Pearlloid
Finish: Oil
Headstock: Verge 6 in line
Nut: TUSQ / 42,9 mm

BODY

Body: Solid / Semi-hollow
Finish: Nitrocellulose lacquer
Binding: Fretboard / F-hole / Top

HARDWARE

Tuners: Schaller
Tail: Stotail Schaller / Bigsby B5
Bridge: Levitator
Pickups: Goldsound
Knobs: Schaller
Control: Master Vol. / Master Tone

MEASSUREMENTS

Width: 327 mm
Length: 981 mm
Weight: 3,2 - 3,5 kg.



WINGMAN



START RRP INCL. VAT
4.698 EUR

NECK

Scale: 25,5"
Type: Bolt-on
Profile: Modern C / 1F: 20,5mm / 12F: 23 mm
Fretboard: 12" Radius
Frets: Medium Jumbo
Inlay: Crown / Dot Pearloid
Finish: Oil
Headstock: Teardrop 3x3 / Blade 6 in line
Nut: TUSQ / 42,9 mm

BODY

Body: Solid
Finish: Nitrocellulose lacquer
Binding: Fretboard / Headstock

HARDWARE

Tuners: Schaller
Tail: Stoptail Schaller / Bigsby B5
Bridge: Levitator
Pickups: Goldsound
Knobs: Bell / Tophat
Control: N: Vol. / B: Vol. / Master Tone

MEASUREMENTS

Width: 354 mm
Length: 1043 mm / 1061 mm
Weight: 3,3 - 3,5 kg.



BASS

Baum[®]
Custom

MIDHOGG



START RRP INCL. VAT
5.201 EUR

NECK

Scale: 34"
Type: Bolt-on
Profile: Modern C / 1F: 20,5mm / 12F: 23 mm
Fretboard: 12" Radius
Frets: Medium Jumbo
Inlay: Crown / Dot Pearloid
Finish: Oil
Headstock: Eagle 2x2
Nut: TUSQ / 41,9 mm

BODY

Body: Solid
Finish: Nitrocellulose lacquer
Binding: Fretboard

HARDWARE

Tuners: Schaller
Tail: -
Bridge: Schaller Top Loaded
Pickups: Goldsound
Knobs: Bell / Tophat
Control: Master Vol. / Blend / N: Tone / B: Tone

MEASSUREMENTS

Width: 350 mm
Length: 1120 mm
Weight: 4 kg.



WINGMAN



START RRP INCL. VAT
5.034 EUR

NECK

Scale:	34"
Type:	Bolt-on
Profile:	Modern C / 1F: 20,5mm / 12F: 23 mm
Fretboard:	12" Radius
Frets:	Medium Jumbo
Inlay:	Crown / Dot Pearloid
Finish:	Oil
Headstock:	Wave 4 in line
Nut:	TUSQ / 41,9 mm

BODY

Body:	Solid
Finish:	Nitrocellulose lacquer
Binding:	Fretboard

HARDWARE

Tuners:	Schaller
Tail:	-
Bridge:	Schaller Top Loaded
Pickups:	Goldsound
Knobs:	Bell / Tophat
Control:	Master Vol. / Blend / Master Tone

MEASUREMENTS

Width:	355 mm
Length:	1185 mm
Weight:	4 kg.



BE A PART OF THE BAUM FAMILY

Baum[®]
Custom

Contact Jeppe Garfunkel
jg@baumguitars.com

Web: baumguitars.com
Instagram: [instagram.com/baumguitars](https://www.instagram.com/baumguitars)



Baum may provide Product Information, including technical information, specifications, recommendations, and other materials (collectively "Product Information") for customer's convenience. The Product Information contained within this Baum catalog and the items offered are intended to provide information about products available for purchase from Baum. All reasonable efforts have been made to ensure the accuracy of the information. The accuracy or completeness of Product Information is not guaranteed and is subject to change without notice. No license under any Baum or third party intellectual property rights is granted or implied with this product information. The customer is solely responsible for evaluating and selecting Products and determining whether each product is fit for a particular purpose and suitable for the customer's use and method of application.